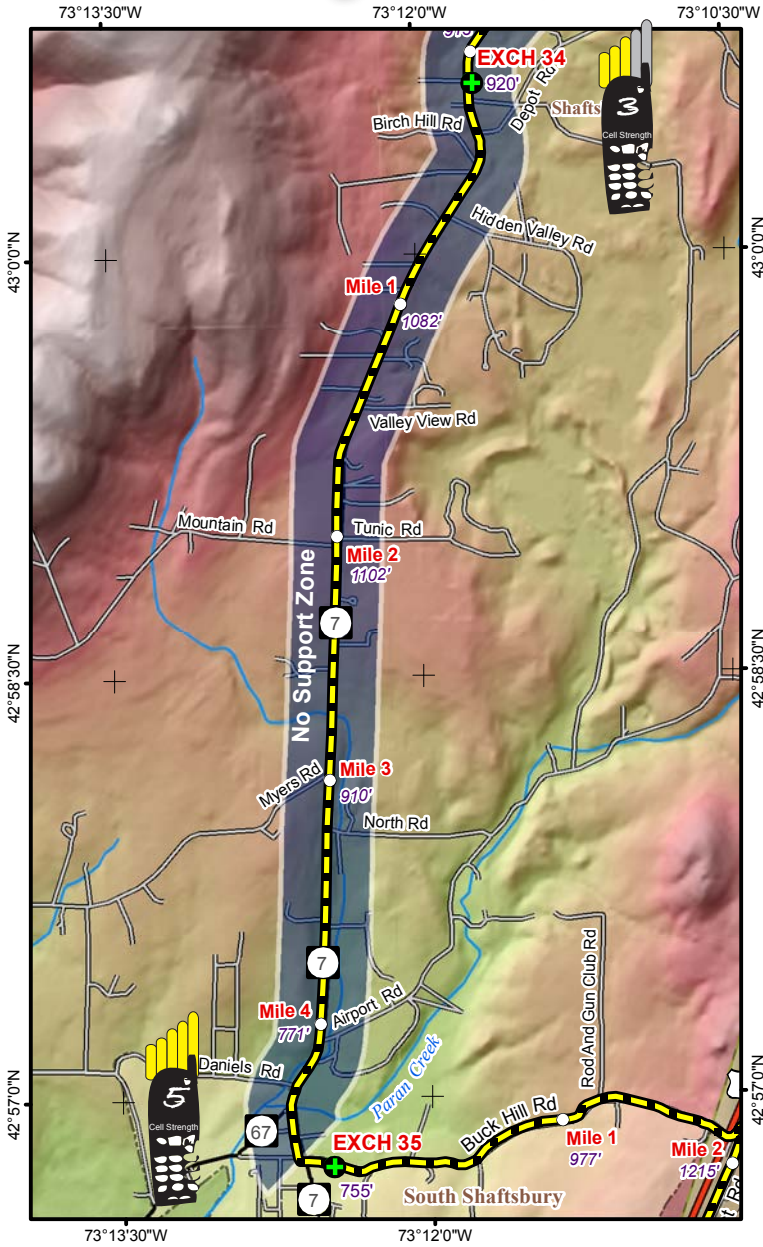


# LEG 35 -- 4.7 MILES -- MODERATE



**LEG DESCRIPTION** –shoulder of RT 7A (moderate traffic)

Terrain – rolling, some hills

Surface – paved roads

### LEG NOTES

Runners on left side of road; CAUTION on shoulder of RT 7A – moderate oncoming traffic; CAUTION entering Shaftsbury

Vans - follow runners route

**Exchange Parking** – turn right into parking lot for Shaftsbury Elementary School; do not block access to Volunteer Fire Department building; CAUTION – watch out for runners

### MILEAGE

- 0.0 Turn left on RT 7A
- 0.6 Clear Brook Farms on left
- 3.7 Quiet Horizons on right
- 4.2 William Dailey Cement Plant on left
- 4.6 Turn left Buck Hill Rd
- 4.7 Exchange 35 - Shaftsbury Elementary School on right

