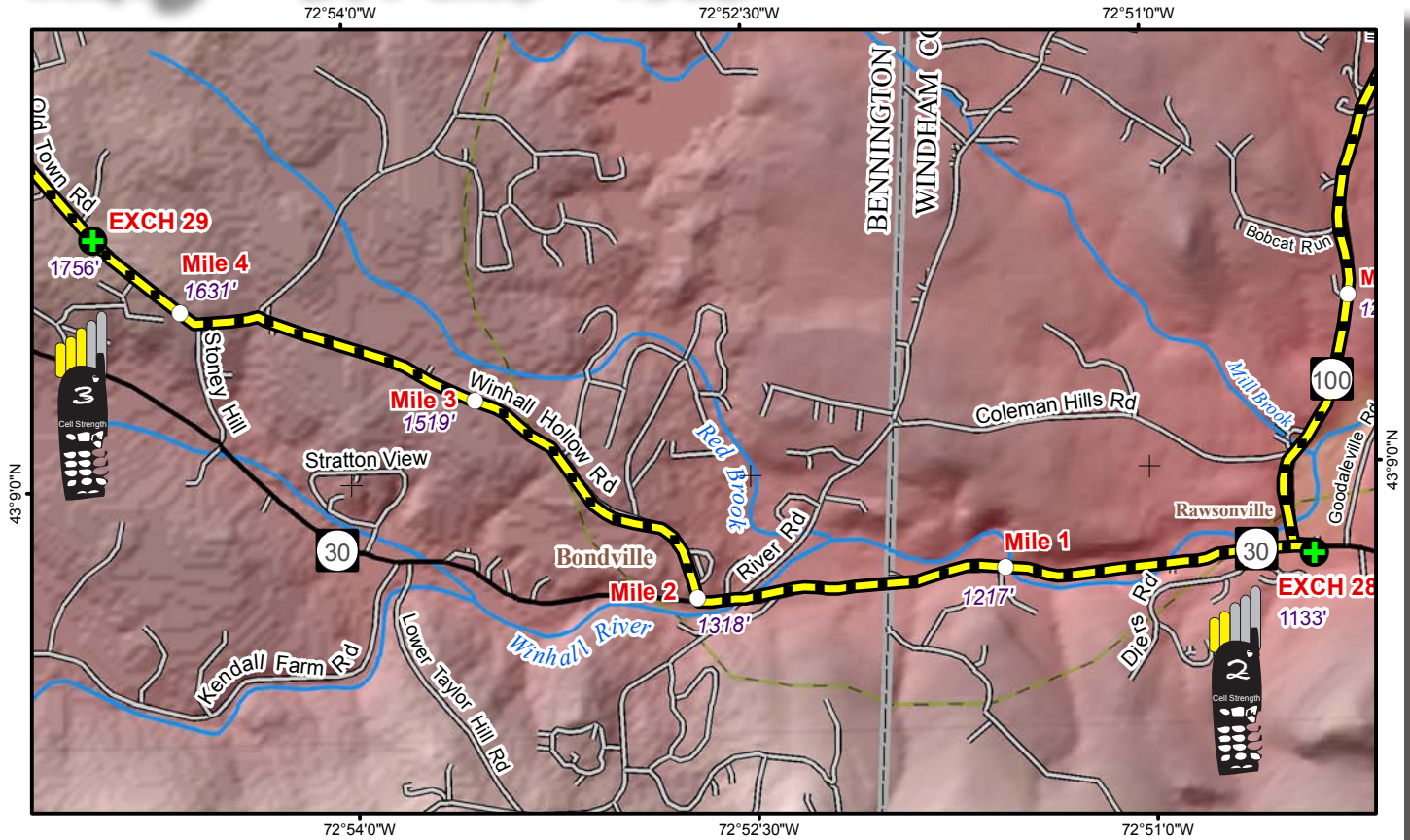


# LEG 29 -- 4.4 MILES -- HARD



**LEG DESCRIPTION** – wooded canyon & farmland with residences

Terrain – steady climb

Surface – paved roads

**LEG NOTES**

Runners on left side of road; CAUTION entering Winhall

Vans - follow runners route

**Exchange Parking** – turn left into Winhall Highway Maintenance yard; do not block access to school buses, garage doors, or recycle area. CAUTION – watch out for runners

**MILEAGE**

0.0 Turn left out of parking lot towards intersection of RT

- 100 & RT 30
- 0.1 Continue straight on RT 30
- 1.7 Norse House Ski Shop on left
- 2.0 Turn right Winhall Hollow Rd.
- 3.7 Turn left Old Town Rd
- 4.4 Exchange 29 - Winhall Highway Maintenance Facility on left

