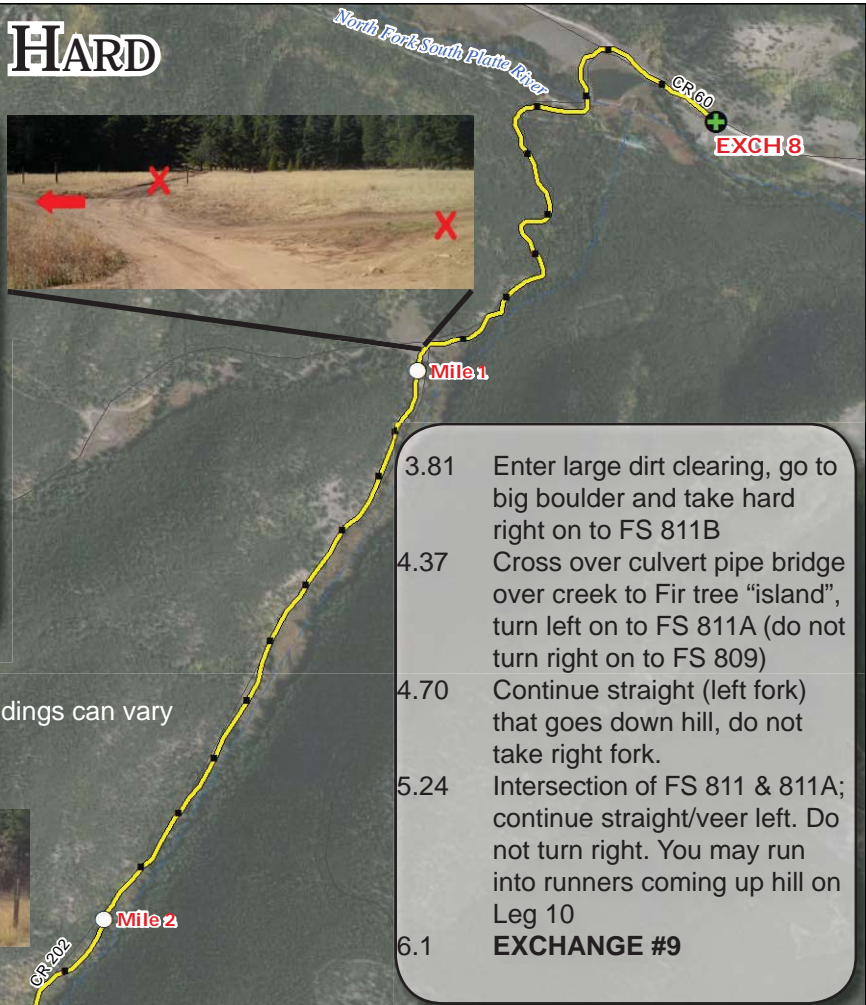


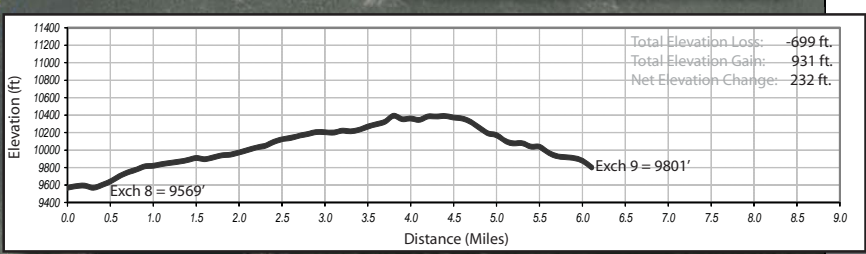
LEG 9 -- 6.1 MILES -- HARD

- Mileage**
- 0.0 Continue west on CR 60
 - 0.21 Left turn at brown sign after pond; sign says "Beaver Creek 4 1/2 Miles"
 - 0.32 Cross bridge over creek; follow dirt road that curves right and immediately starts to climb
 - 0.44 Curve left - sign says "This Road Open to..."
 - 0.97 Intersection of three dirt roads; don't take first or second right; follow FS 123 to left (marker obvious)
 - 3.05 Turn left on to FS 811B (marker obvious) and cross beaver pond (knee to mid-thigh depth) then continue up jeep road which curves to left
 - 3.77 Top of climb



- 3.81 Enter large dirt clearing, go to big boulder and take hard right on to FS 811B
- 4.37 Cross over culvert pipe bridge over creek to Fir tree "island", turn left on to FS 811A (do not turn right on to FS 809)
- 4.70 Continue straight (left fork) that goes down hill, do not take right fork.
- 5.24 Intersection of FS 811 & 811A; continue straight/veer left. Do not turn right. You may run into runners coming up hill on Leg 10
- 6.1 **EXCHANGE #9**

WARNING: Mileages approximate as GPS readings can vary



Mile 3.05

Mile 4.37

Mile 3.9

