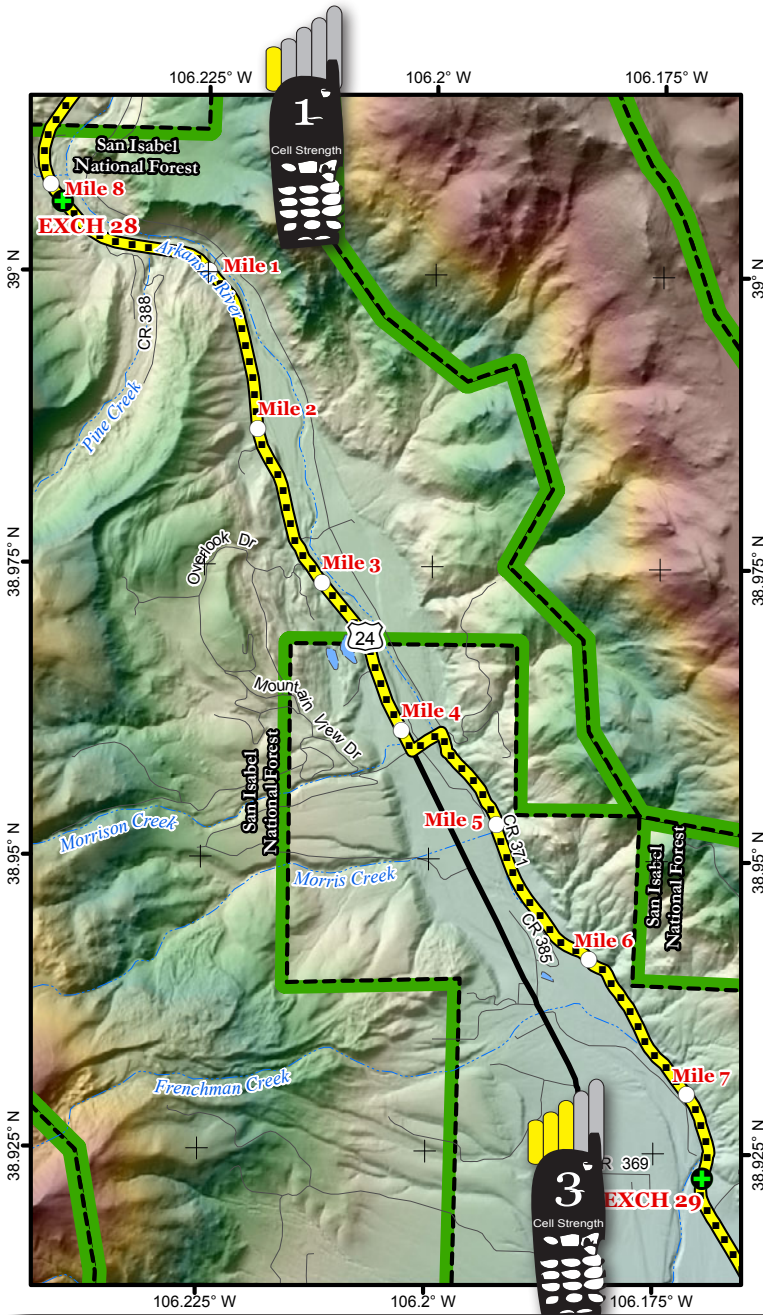


LEG 29 -- 7.5 MILES -- MODERATE



LEG DESCRIPTION

US highway and rural dirt road next to the Arkansas River

Terrain – undulating and descending

Surface – paved and dirt roads

LEG NOTES

Runners on left side of road

Van Route: Follow runners route; narrow road; drive SLOW to minimize dust and be aware of vehicles traveling in opposite direction

Exchange Parking –Railroad Bridge Recreation site; shared site with the public

Mileage

- 0.0 Continue South on US 24
- 4.1 Turn Left County Road 371 – dirt road
- 4.3 Turn Right County Road 371
- 7.5 **EXCHANGE #29 – Railroad Bridge Recreation site**

