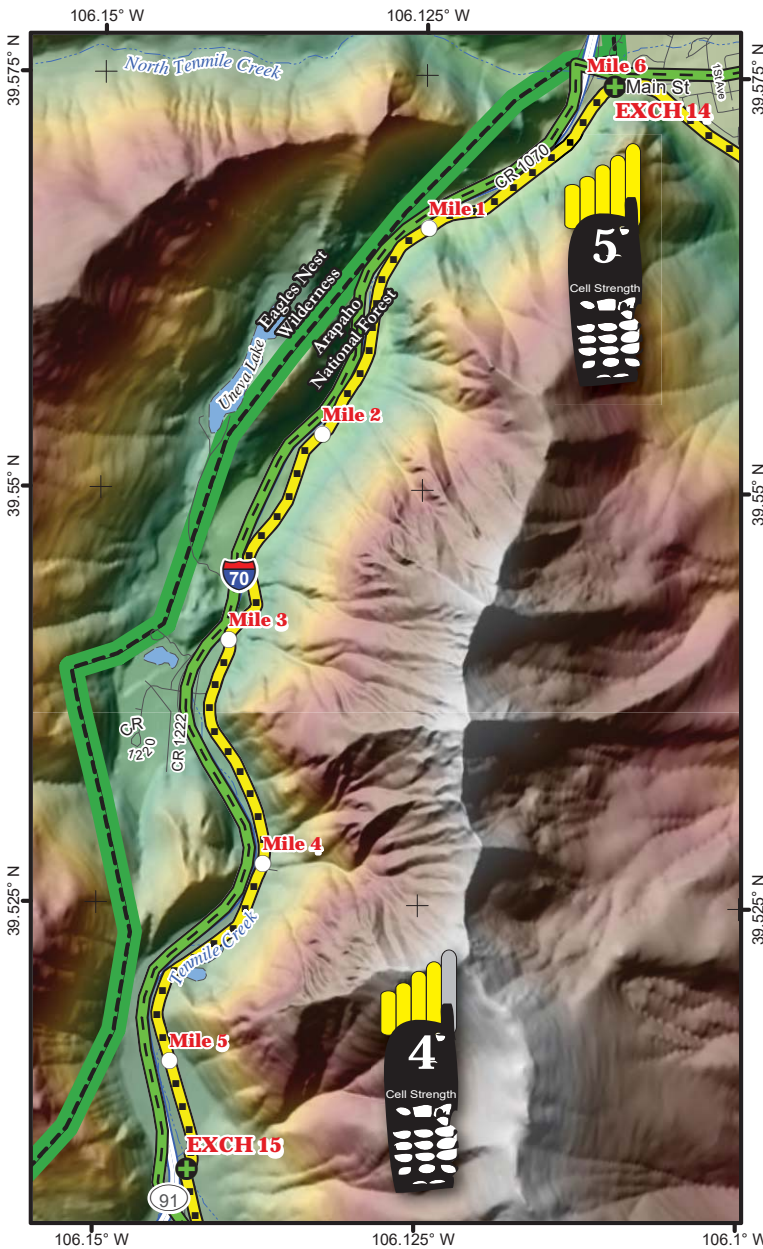


# LEG 15 -- 5.5 MILES -- MODERATE



## LEG DESCRIPTION

Bike path through woods up to Copper Mountain

**Terrain** – continuous climb

**Surface** – paved bike path

## LEG NOTES

Runners on left side of road

Van Route:

- 0.0 Turn left out of trailhead parking on to Main St; pass under I-70
- 0.2 Turn Left on to onramp westbound I-70
- 5.6 Take Exit 198 for Copper Mountain/ Hwy 91 Leadville; continue straight on Hwy 91 and take the first left that is opposite the Copper Mountain Resort entrance. Continue down this frontage road past the gas station until it dead ends in the parking lot - Exchange #15 parking lot.

**Exchange Parking** – Wheeler Junction parking lot

## Mileage

- 0.0 Continue west on bike path
- 3.2 Landmark – bathrooms on right
- 5.5 End of bike path - **VAN EXCHANGE #15 Wheeler Junction parking lot**

