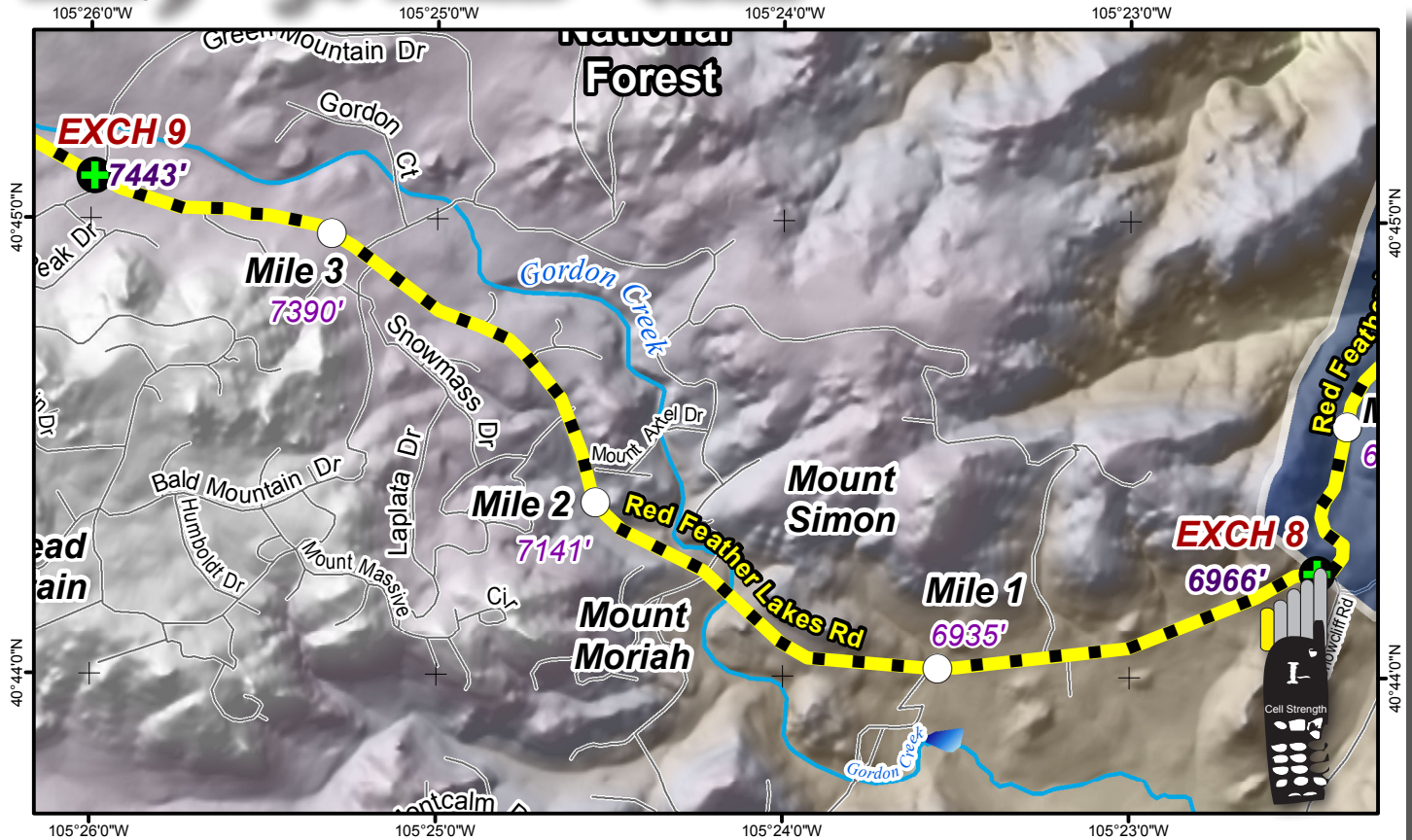


# LEG 9 -- 3.6 MILES -- HARD



**Leg Description** – through the foothills past rural homes and ranches

**Terrain** – climbing

**Surface** – paved road

**LEG NOTES**

**Runners** on left; **CAUTION** exiting and entering exchanges

**Vans** – follow runners’ route; **CAUTION** exiting and entering exchanges

**Exchange Parking** – turn left on the Green Mountain Way to the Glacier View Fire Station; follow race marshals instructions as there are areas open for parking and areas closed to parking. Access to the station can not be blocked at any time.

**Services** – the Western Ridge Restau-

rant is at mile 1 on Leg 9 and is located to the left down the hill on Eigler Rd.

**Mileage**

- 0.0 Continue west on Red Feather Lakes Rd
- 1.0 intersection with Eigler Rd
- 3.6 **Exchange #9 - intersection of Red Feather Lakes Rd and Green Mountain Way and Glacier View Fire Station**

