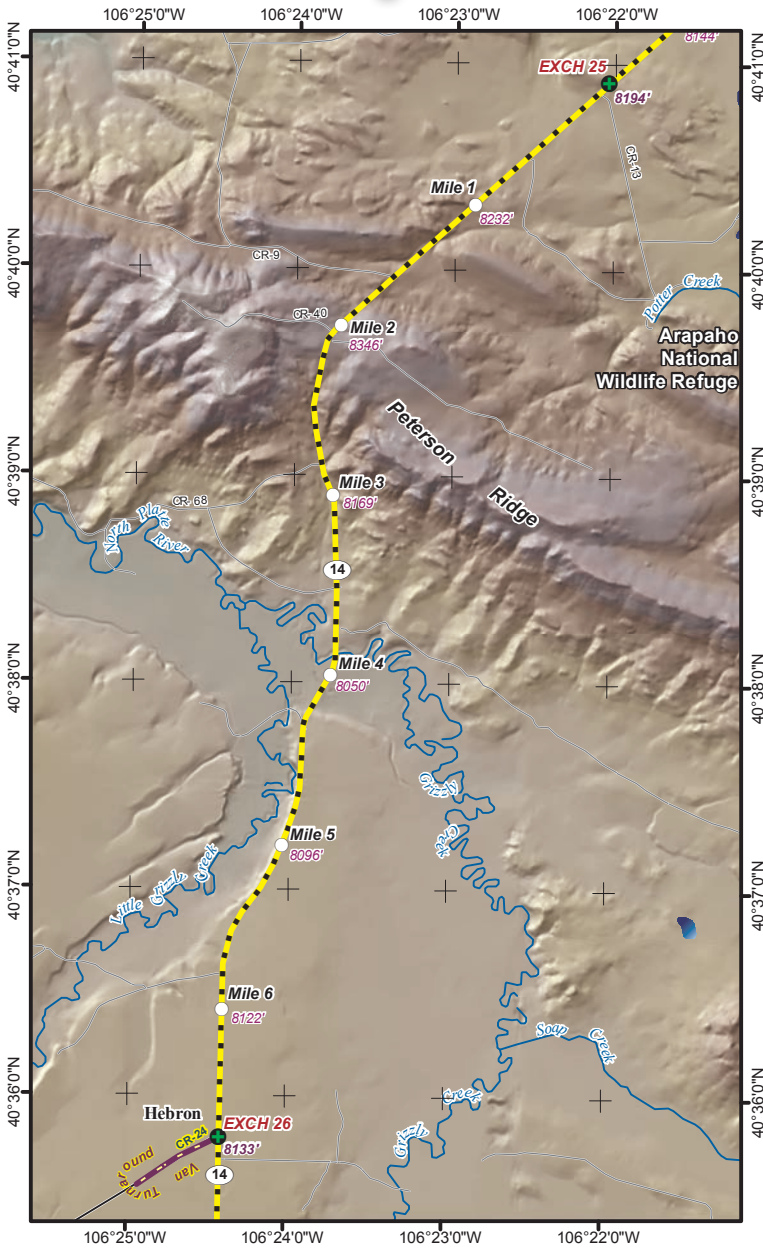


LEG 26 -- 6.7 MILES -- EASY



Leg Description – through ranching country

Terrain – rolling

Surface – paved road

LEG NOTES

Runners on left; runners must wear reflective vest and blinking red light, and carry a flashlight or headlamp if they start their leg before 6:00AM.

Vans – follow runners' route; **CAUTION** – runners entering and exiting exchange

Exchange Parking – turn right on CR 24, turn around and park facing CO 14; actual exchange is in the pullout on left

Mileage

- 0.0 Continue west on CO 14
- 1.6 CR 9 on right
- 3.9 Cross Grizzly Creek
- 6.7 **EXCHANGE #26 – Hebron (abandoned buildings)**

