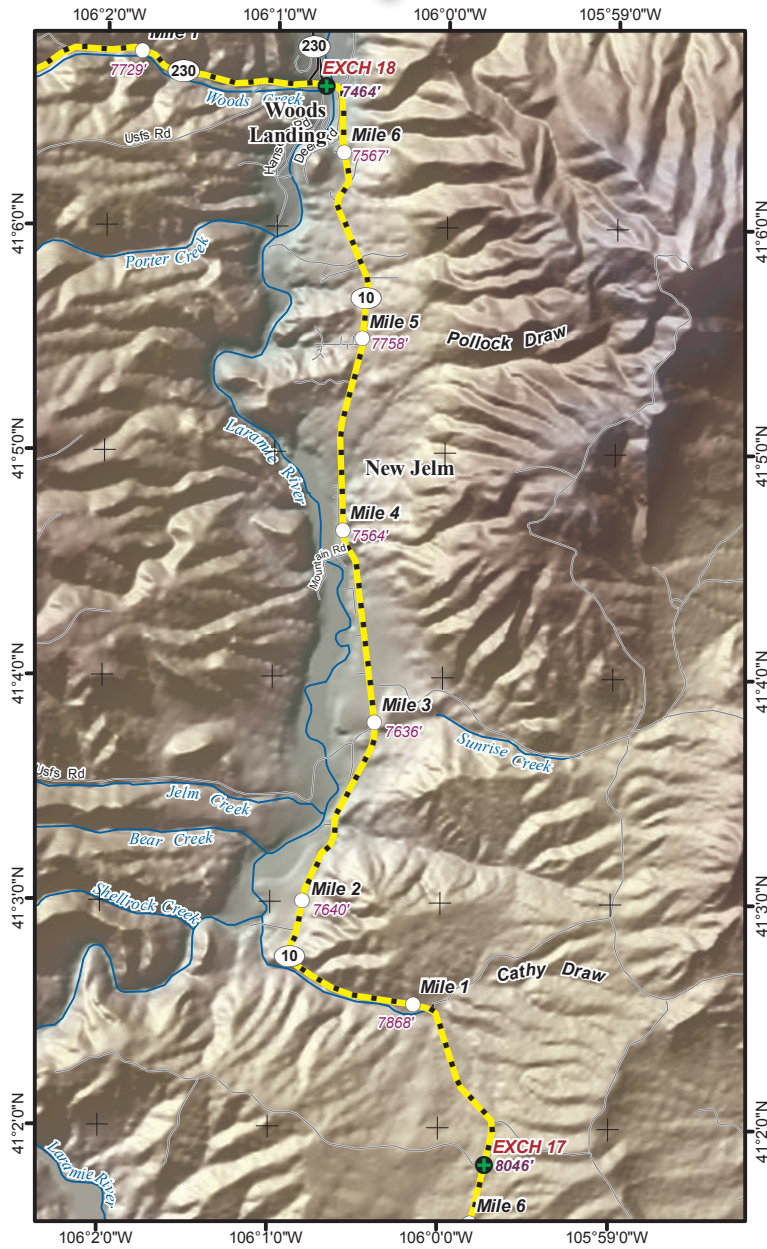


LEG 18 -- 6.4 MILES -- MODERATE



Leg Description – passing through the Laramie River Valley, home of cattle ranches and the small mountain communities of Jelm and Woods Landing



Terrain – rolling descent

Surface – paved road

LEG NOTES

Runners on left; runners must wear a reflective vest and a blinking red light, and carry a flashlight or headlamp. **CAUTION** – several cattle guards on this leg

MAJOR VAN EXCHANGE

Vans – follow runners' route; **CAUTION** – runners entering and exiting exchange

Exchange Parking – in the parking lot of the Woods Landing Café & Bar; the restaurant is preparing a buffet for WWR participants; see WWR Race Handbook

Mileage

- 0.0 Continue north on WY 10
- 1.9 El Ranch Pequeno on left
- 3.1 **CAUTION – CATTLE GUARD**
- 4.2 Big Laramie River – Jelm Fishing Access
- 5.0 **CAUTION – CATTLE GUARD**
- 5.7 **CAUTION – CATTLE GUARD**
- 6.4 **EXCHANGE #18 – Woods Landing Bar & Café**

