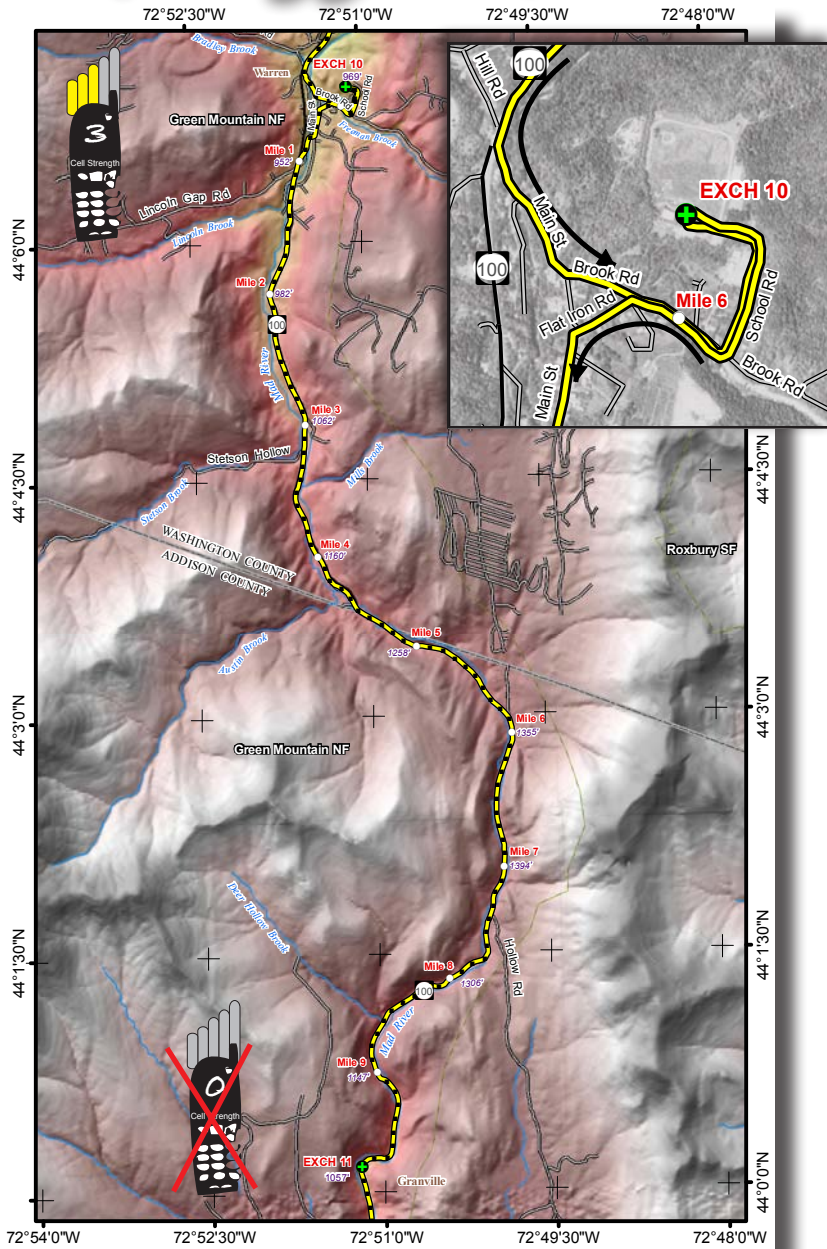


# LEG 11 -- 9.9 MILES -- HARD



**LEG DESCRIPTION** – small town of Warren, covered bridge, wooded Granville Gulch with creek, waterfall, the most beautiful leg

Terrain – rolling gradual climb and descent

Surface – paved roads

### LEG NOTES

Runners on left side of road

**Vans - Exchange 11 is limited in size so we need to limit the time you are parked in the exchange; follow the runners route and safely stop and use the pullouts to cheer on your runners. You must stop at the pullout on the right with the big waterfall - this pullout will be staffed with volunteers. Please wait in the area until your runner passes. It is then 1.3 miles to the Exchange so you will have time to get there.**

**Exchange Parking** – turn left into dirt road in wooded area, park on right side of dirt road pulling over enough to leave room so other vans can pass; CAUTION – watch out for runners

### MILEAGE

- 0.0 Continue back out on School St
- 0.3 Turn right on Brook Rd
- 0.4 Turn left Flat Iron Rd
- 0.6 Turn left Main St
- 0.9 Warren Covered Bridge
- 1.1 Turn left RT 100
- 3.1 Bridge
- 8.6 Waterfall on right
- 9.9 Exchange 11 - dirt pullout in trees on left

