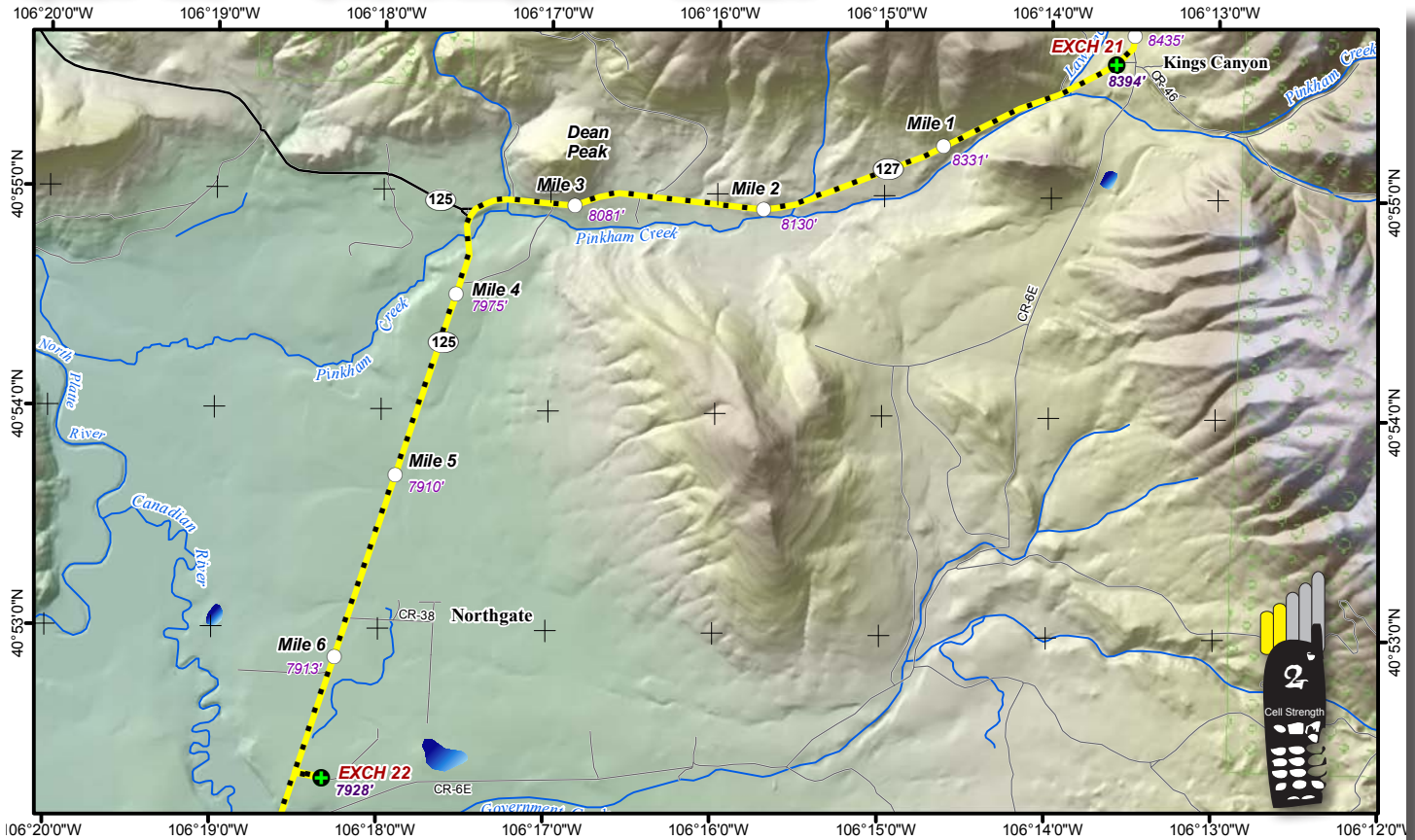


# LEG 22 -- 6.8 MILES -- EASY



## QUIET ZONE

This is a private residence, so **TURN OFF ALL RADIOS, NO SHOUTING OR DOOR SLAMMING.**

**Leg Description** – dropping from the mountains into the grassland and ranches of North Park

**Terrain** – gradual descent

**Surface** – paved road

## LEG NOTES

**Runners** on left; runners must wear a reflective vest and a blinking red light, and carry a flashlight or headlamp.

**Vans** – follow runners' route; **CAUTION** – runners entering and exiting exchange

**Exchange Parking** – Turn left over cattle guard (before actual runner exchange) on driveway to residence. Park straight-in along fence. **QUIET ZONE!**

## Mileage

- 0.0 Continue south on CO 127
- 3.0 Davis Ranch – white house and big barn with red roof
- 3.6 Take left turn at Intersection with CO 125
- 4.1 Northgate Minimart (abandoned) on left
- 6.6 Turn left on CR 6 (opposite Wyatt Gravel Pit #2) to exchange. **CAUTION** - cattle guard at entrance to turn
- 6.8 EXCHANGE #22 in dirt area

