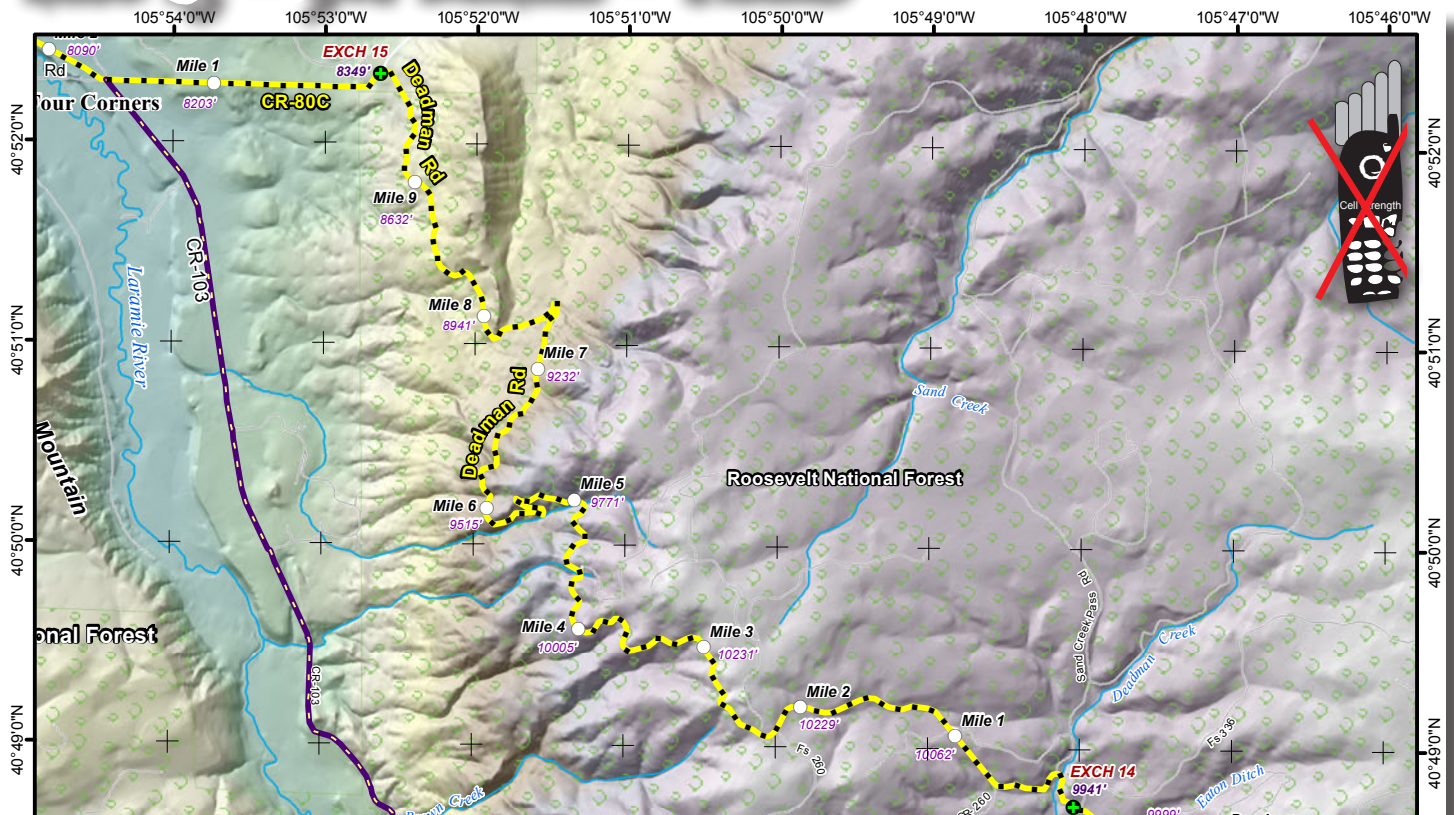


# LEG 15 -- 9.8 MILES -- HARD



**Leg Description** – dirt mountain road through Roosevelt National Forest

**Terrain** – high altitude moderate climb followed by long descent towards Laramie River Road

**Surface** – dirt road; dusty

**LEG NOTES**

**Runners** on left; if you will not arrive at Exchange 15 before 8:00PM, runners

must wear a reflective vest and a blinking red light, and carry a flashlight or headlamp

**Vans** – follow runners route; **Please drive slow to minimize dusty conditions; CAUTION** - runners entering and exiting exchanges

**Exchange Parking** – park on far right shoulder to save room for runners and passing vans

**Mileage**

- 0.0 Continue west on Deadman Rd
- 0.2 Sand Creek – Rd 336
- 0.5 NFS Rd 524
- 2.2 NFS Rd 260
- 2.4 NFS Rd 303
- 9.2 **CAUTION - CATTLE GUARD EXCHANGE #15 - at intersection of Deadman Rd and CR 80**
- 9.4

