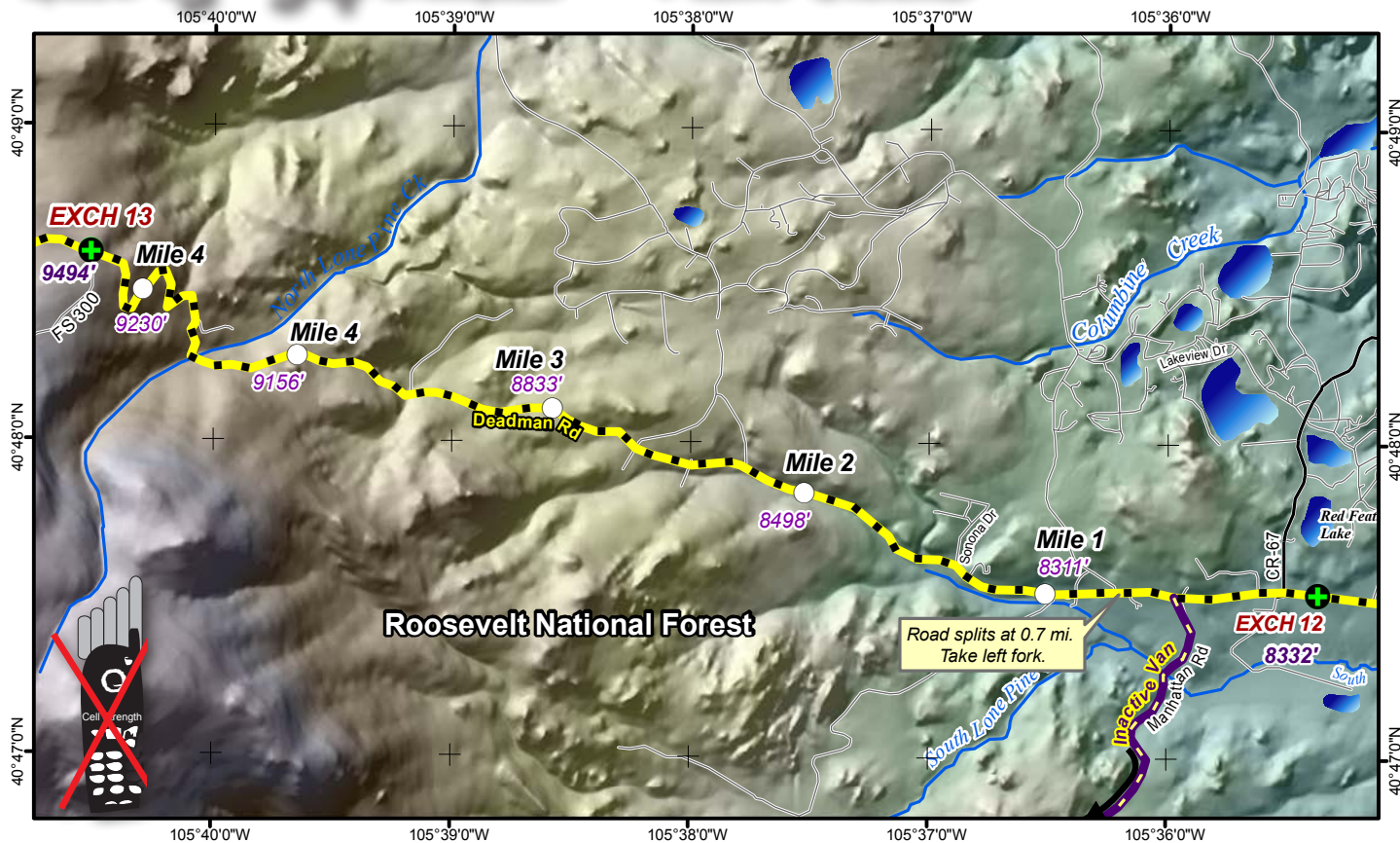


LEG 13-- 5.4 MILES -- VERY HARD



Leg Description – dirt mountain road through Roosevelt National Forest

Terrain – continuous high altitude climb

Surface – dirt road; dusty

LEG NOTES

Runners on left

Active Vans only – inactive vans must take alternate route

Vans – follow runners' route; **Please drive slow to minimize dusty conditions; CAUTION** – runners entering and exiting exchange

Exchange Parking – in dirt area to the left at the intersection; overflow parking will be along the right shoulder of Deadman Road

Mileage

- 0.6 Pot Belly Deli and intersection with CR 162 (Manhattan Rd - inactive vans turn left here)
- 0.7 "Y" intersection – take left fork – becomes CR 162; road changes to dirt
- 1.7 **CAUTION – CATTLE GUARD**
- 3.5 Call Box and road gate
- 4.8 North Lone Pine Overlook and Trail
- 5.4 **EXCHANGE #13** – intersection with FS Rd 173

