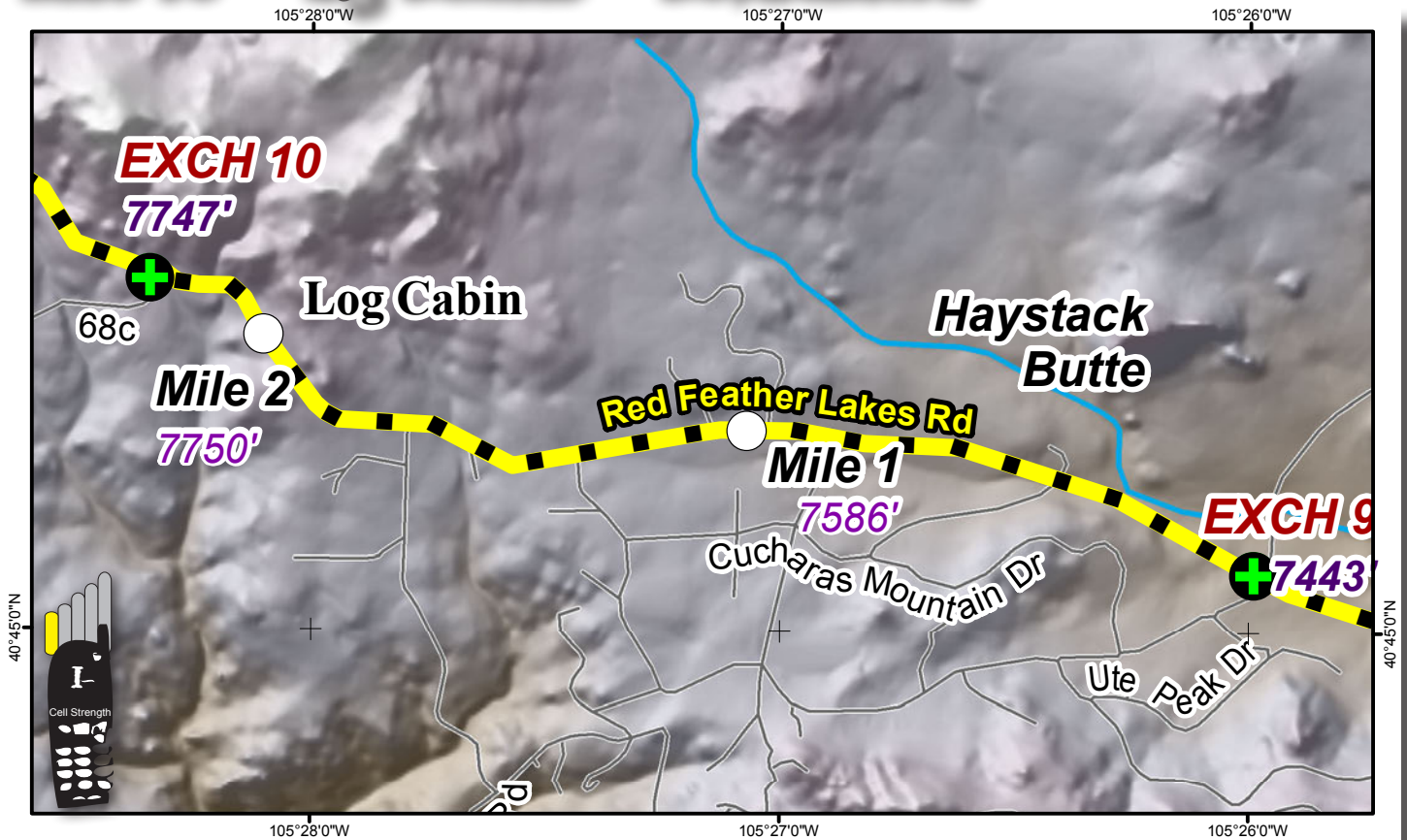


LEG 10 -- 2.3 MILES -- MODERATE



Leg Description – through the foothills past rural homes and ranches

Terrain – climbing

Surface – paved road

Vans – follow runners' route; Exchange is a 3-way intersection with CR 68

Exchange Parking – turn left into Exchange and park in the dirt lot to the right

Mileage

- 0.0 Continue west on Red Feather Lakes Rd.
- 2.3 **EXCHANGE 10** – 3-way intersection with CR 68C

LEG NOTES

Runners on left

