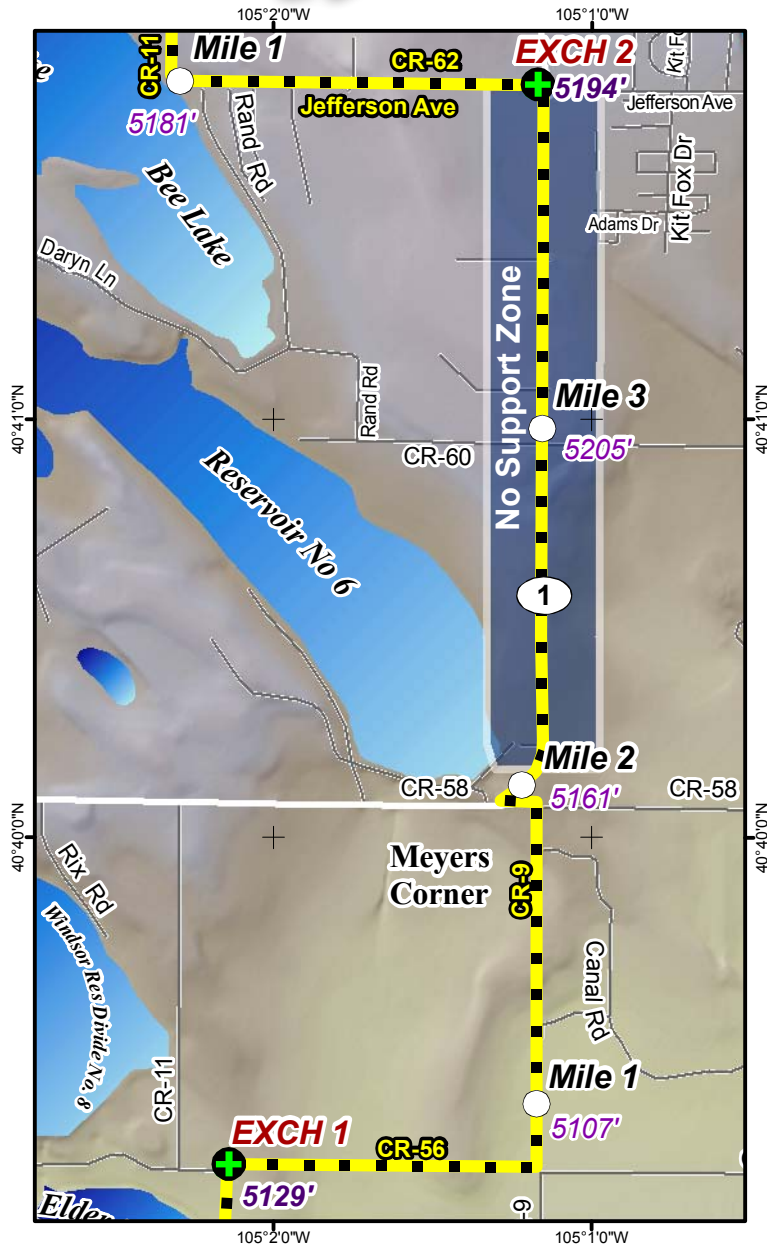


LEG 2 -- 3.9 MILES -- EASY



LEG DESCRIPTION – past ranches on rural roads and US 1.

Terrain – Flat

Surface – some dirt first but mostly paved road

LEG NOTES

Runners on left side of road

CAUTION crossing HWY 1; go immediately to the wide left shoulder after crossing

Vans – follow runners route

Exchange Parking - turn left onto Country Road 62 and park in dirt parking area off the road on right

Mileage

- 0.0 Continue east on County Road 56
- 0.8 Turn Left County Road 9 (road becomes paved)
- 1.9 Turn Left County Road 58 (3-way intersection)
- 2.0 Intersection with Hwy 1 - **CAUTION** - runners must wait until race marshal clears you to cross. Teams ignoring Race Marshal's instructions will be disqualified
- 3.0 Cross County Road 60
- 3.9 Turn Left County Road 62 - road changes to dirt
- 3.9 **EXCHANGE #2** - intersection of County Road 62 and Hwy 1

