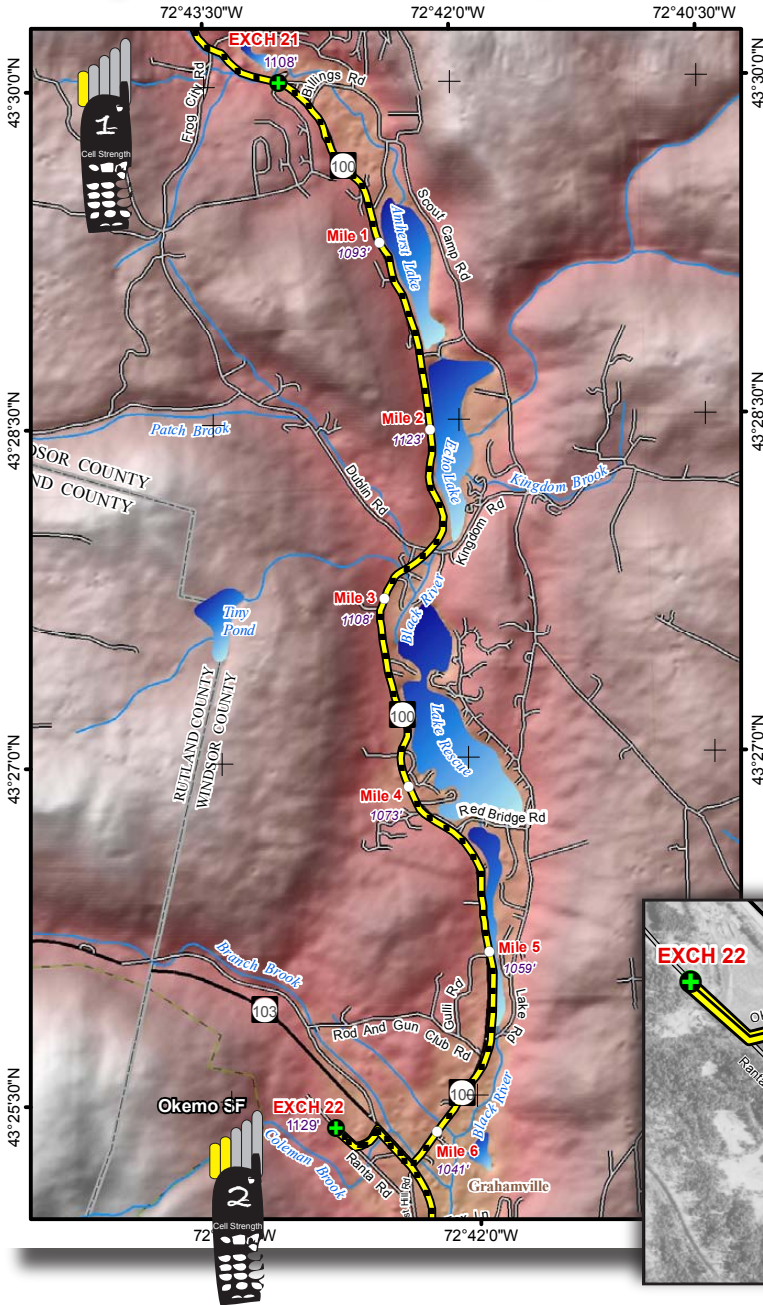


# LEG 22 -- 6.8 MILES -- MODERATE



**LEG DESCRIPTION** – wooded canyon & farmland with some residences; QUIET ZONE THROUGH RESIDENTIAL AREA

Terrain – rolling

Surface – paved roads

**LEG NOTES**

Runners on left side of road; CAUTION crossing RT 103 then be prepared for immediate right turn

Vans – follow runners' route

**Exchange Parking** – turn right into large ski area parking lot; CAUTION – watch out for runners

**MILEAGE**

- 0.0 Continue south on RT 100
- 1.2 Lake on left starts
- 2.0 Echo Lake Inn sign and bridge
- 5.2 Ludlow Electric Department on left
- 6.2 Turn right RT 100/RT 103; CAUTION crossing highway
- 6.5 Turn left on Okemo Ridge Rd
- 6.8 Exchange 22 - turn right up hill towards hotels, turn right into the second parking lot entrance on your right to the exchange

